

ACCESSORIES

PRESSURE TANKS



TRACER PUMPS

LEADING IN MOTION

PRESSURE TANKS:

Bladder type



Operation and Application

The bladder type series of pressure tanks is designed to provide reliable storage for pressurized water in a booster pump system. The pressure tank effectively releases its stored volume of pressurized water on demand and prevents pump start-ups for demands lower than its storage capacity. The internal bladder ensures that there is no contact between the water and the air.

Liquid Temperature

EPDM Bladder	0°C to 99°C
Ambient Temperature	up to 45°C
Max. Working Pressure	8 bar

Technical features

Tank:	Carbon Steel
Bladder:	EPDM
Orientation:	Vertical or horizontal
Connections:	1" – 1½" BSP
Capacity:	24L, 60L and 100L

Replaceable bladders available



PRESSURE TANKS:

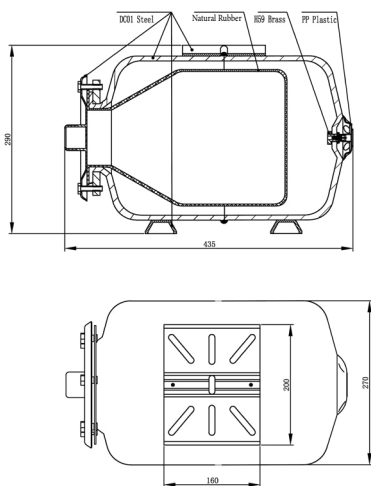
Bladder type

Specifications

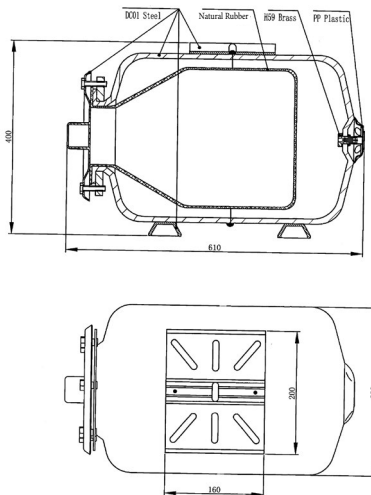
MODEL	ORIENTATION	NOMINAL VOLUME	SIZE
		(litre)	(mm)
H024	Horizontal	24	435 x 290 x 270
H060	Horizontal	60	610 x 400 x 380
H100	Horizontal	100	645 x 470 x 450
VT024	Vertical	24	330 x 330 x 330
VT060	Vertical	60	470 x 380 x 760
VT100	Vertical	100	470 x 450 x 770

Dimensions - Horizontal tanks

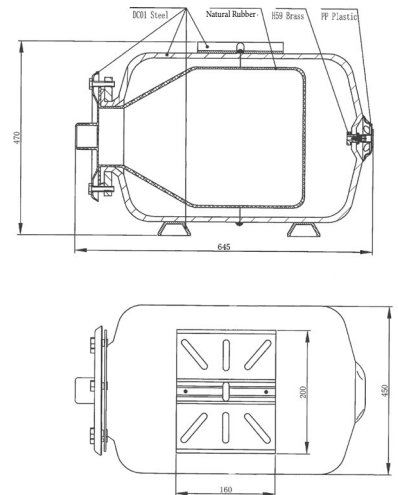
H024



H060

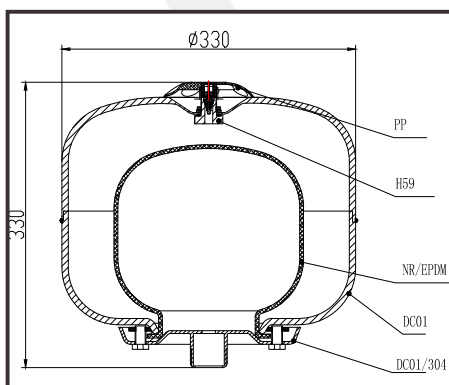


H100

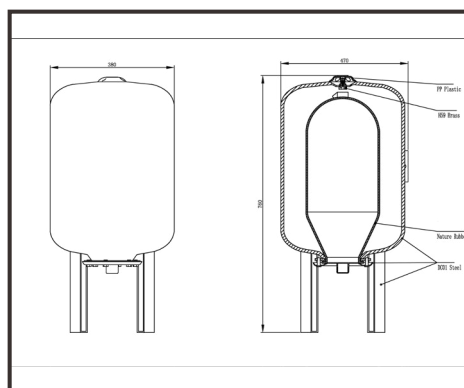


Dimensions - Vertical tanks

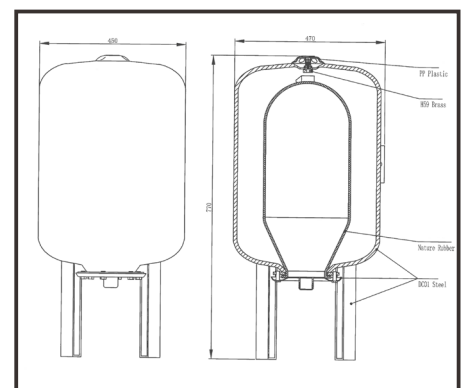
VT024



VT060



VT100



PRESSURE TANKS:

Two-in-one



MODEL	SIZE	MEMBRANE	THICKNESS	HEIGHT	DIAMETER	CAPACITY	DIMENSION	N/W
SINGLE-PHASE	INCH		(mm)	(mm)	(mm)	L	(LxWxH) mm	kg
GFCV36T	1"	EPDM	1.2	600	350	36	35x35x62	6.9/5.9
GFCV50T	1"	EPDM	1.2	710	350	50	35x35x71	8.0/7.1