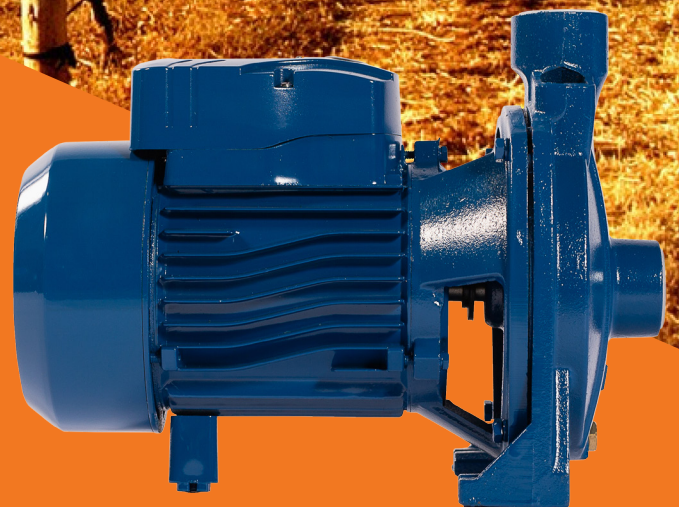


# CENTRIFUGAL RANGE

CPM BOOSTER



***TRACER PUMPS***  
LEADING IN MOTION

2023 V2

# SINGLE STAGE PUMPS

## CPM

### Range of performance

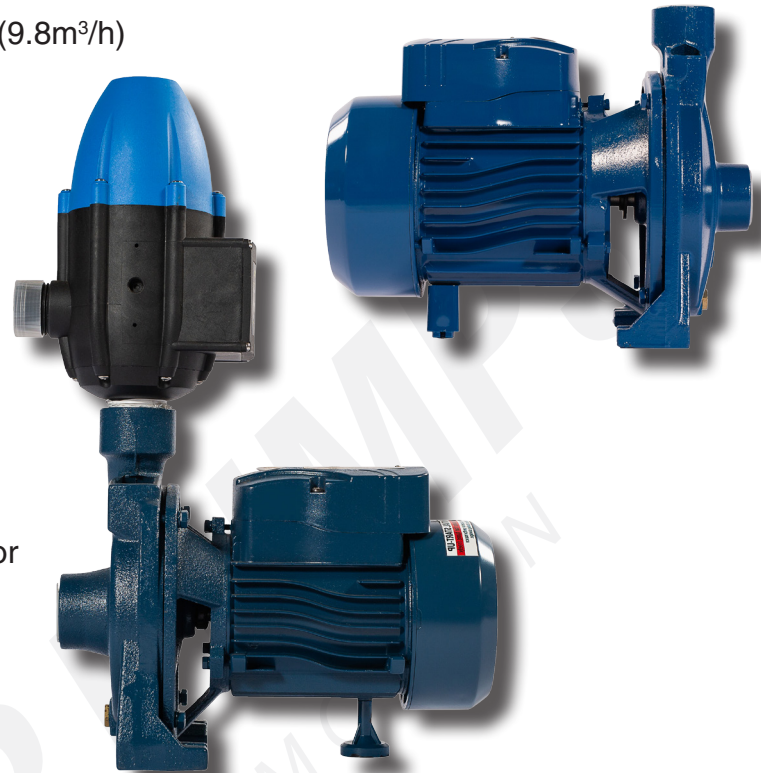
Flow rate: max 164 L/min (9.8m<sup>3</sup>/h)  
Head: max 42m

### Limits of use

Suction lift: max 7m  
Liquid temperature: 40°C  
Ambient temperature: 40°C

### Uses and installations

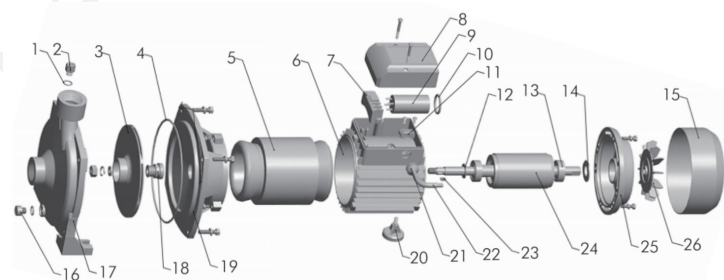
This range is recommended for pumping clean water without abrasive particles and liquids that are chemically non aggressive for the materials of which the pump is made. Due to their reliability, simplicity of use and economy, they are suitable for domestic use and in particular for irrigating and pressure boosting systems. The pump must be installed under a vented cover and protected against exposure to rain or water spray.



### Construction Characteristics

Pump Body: Cast Iron  
Impeller: Brass  
Motor Shaft: Stainless Steel 304  
Mechanical Seal: Ceramic-graphite  
Electric Motor: Single-phase 230V - 50Hz with capacitor and thermal overload protector.  
CP: three-phase 380/400v -50Hz  
Insulation: Class B  
Protection: IP 44

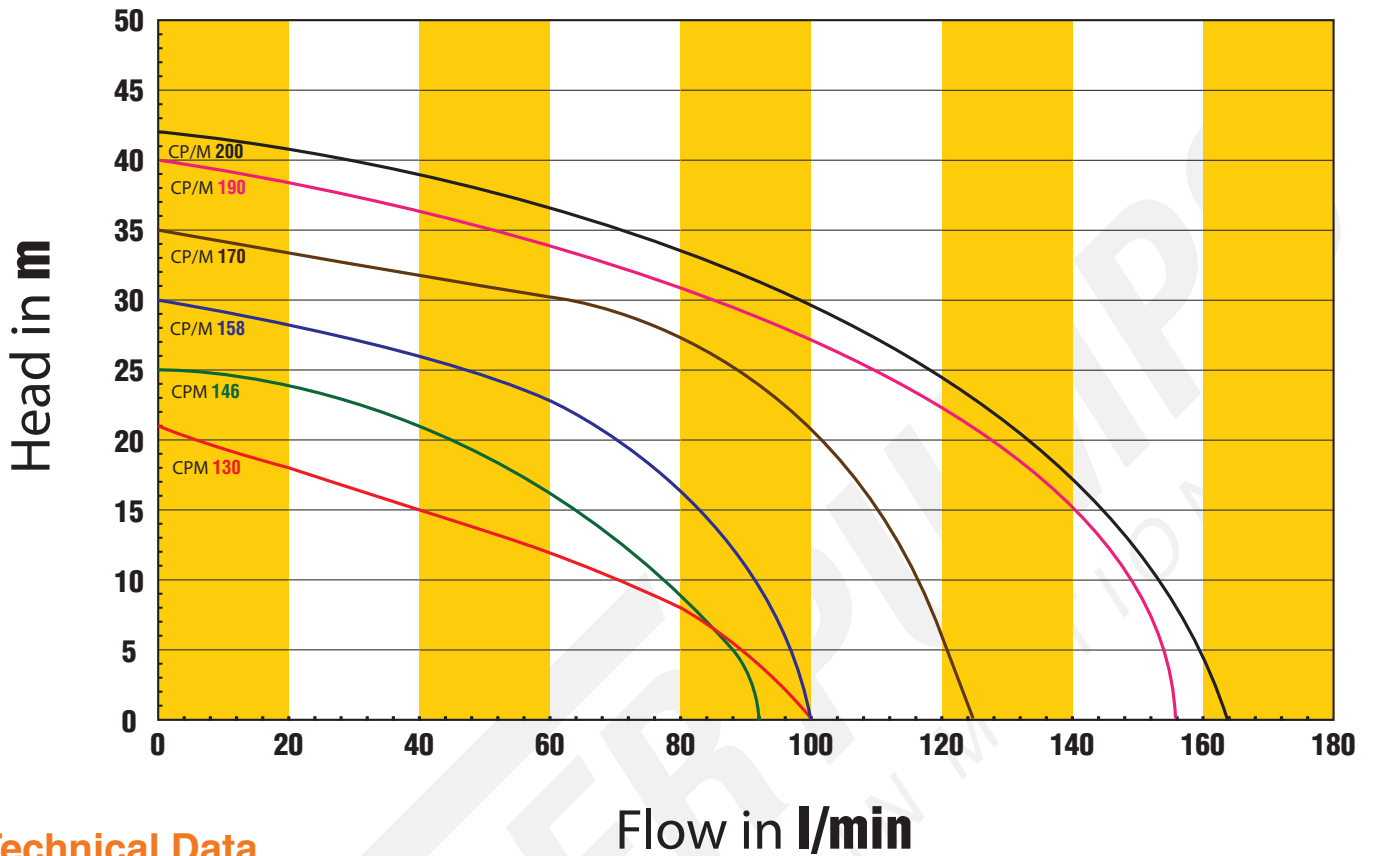
### Diagram



### Diagram

No.	Description	No.	Description	No.	Description	No.	Description
1	O-Ring	7	Terminal board	14	Wave spring	21	Cable protector
2	Brass air vent screw	8	Capacitor cover	15	Fan cover	22	Cable
3	Impeller	9	Capacitor	16	Water vent screw	23	Key
4	O-Ring	10	O-Ring	17	Pump Body	24	Rotor
5	Stator	11	Cable Fixer	18	Mechanical Seal	25	End Cover
6	Motor bracket	12	Water proof ring	19	Coupling	26	Fan
		13	Bearing	20	Foot		

## Hydraulic Performance Curve



## Technical Data

NO	MODE	POWER		Q (m³/h)	0	0.6	1.2	1.8	2.4	3	3.6	4.8	6	7.2
	1ph / 3ph	kW	HP	Q (l/min)	0	10	20	30	40	50	60	80	100	120
1	CPM130	0.37	0.5	H (m)	21	19.4	18	16.4	15	13.5	11.9	8	0	
2	CPM146	0.55	0.75		25	24.7	23.9	22.6	21	18.8	16.1	8.9		
3	CP/M158	0.75	1		30	29.1	28.2	27.1	26	24.5	22.8	16.2	0	
4	CP/M170	1.1	1.5		35	34.1	33.3	32.6	31.8	31	30.2	27.3	20.8	6
5	CP/M190	1.5	2.2		40	39	38.1	37.1	36	35	33.8	31.3	27.2	22.2
6	CP/M200	2.2	3		42	41.7	40.9	40	38.9	37.6	36.1	33	29.4	24

## Dimension

No	Model	Freq.	Suct. Max	Size	Start-up Amps (1ph)	Running Amps (1ph)	Dimension	N/W
	1ph / 3ph	Hz	m	inch	A	A	L x W x H mm	kg
1	CPM130	50	8	1" X 1"	9	2.8	285x185x230	9
2	CPM146	50	8	1" X 1"	14	4.2	340x210x265	12
3	CPM158	50	8	1" X 1"	19	5.8	340x210x265	13
4	CPM170	50	8	1¼" X 1"	23	7.8	390x240x290	19
5	CPM190	50	8	1¼" X 1"	30.5	10	390x260x320	23
6	CPM200	50	8	1¼" X 1"	33	10.6	455x280x340	30.5